



ESTIMATED DELIVERY

Q2-2026



Seagis @ Port 95 | Building D

3410 SW 26th Terrace Dania Beach, FL 33312

**For More Information
Please Contact:**

Jonathan Thiel

954.732.7453

jthiel@bergercommercial.com

Daniel Forman

954.224.9741

dforman@bergercommercial.com

Keith R. Graves, CCIM, SIOR

954.652.2031

kgraves@bergercommercial.com



The BIG Opportunity

Seagis @ Port 95 | Building D delivers a rare opportunity to occupy new, freestanding Class A industrial space in Southeast Broward County. Strategically positioned minutes from Fort Lauderdale-Hollywood International Airport, Port Everglades, I-95, I-595 and Florida's Turnpike, the project provides unparalleled connectivity for regional distribution, air cargo, logistics, e-commerce, and international trade users.



Project Summary

- ±51,574 SF Rare Class A industrial opportunity in one of Broward County's most supply-constrained logistics submarkets.
- Immediate access to I-95, I-595 and Florida's Turnpike.
- Minutes from Port Everglades and Fort Lauderdale-Hollywood International Airport.
- 32' clear heights, 145' truck courts, rear-load configuration, and modern warehouse specifications.
- Institutionally owned and managed by Seagis Property Group, one of the nation's leading industrial operators.



3410 SW 26th Ter.
Dania Beach, FL 33312

© 2026 Berger Commercial Realty Corp., a Licensed Real Estate Broker. All rights reserved.

Jonathan Thiel

954.732.7453

jthiel@bergercommercial.com

Daniel Forman

954.224.9741

dforman@bergercommercial.com

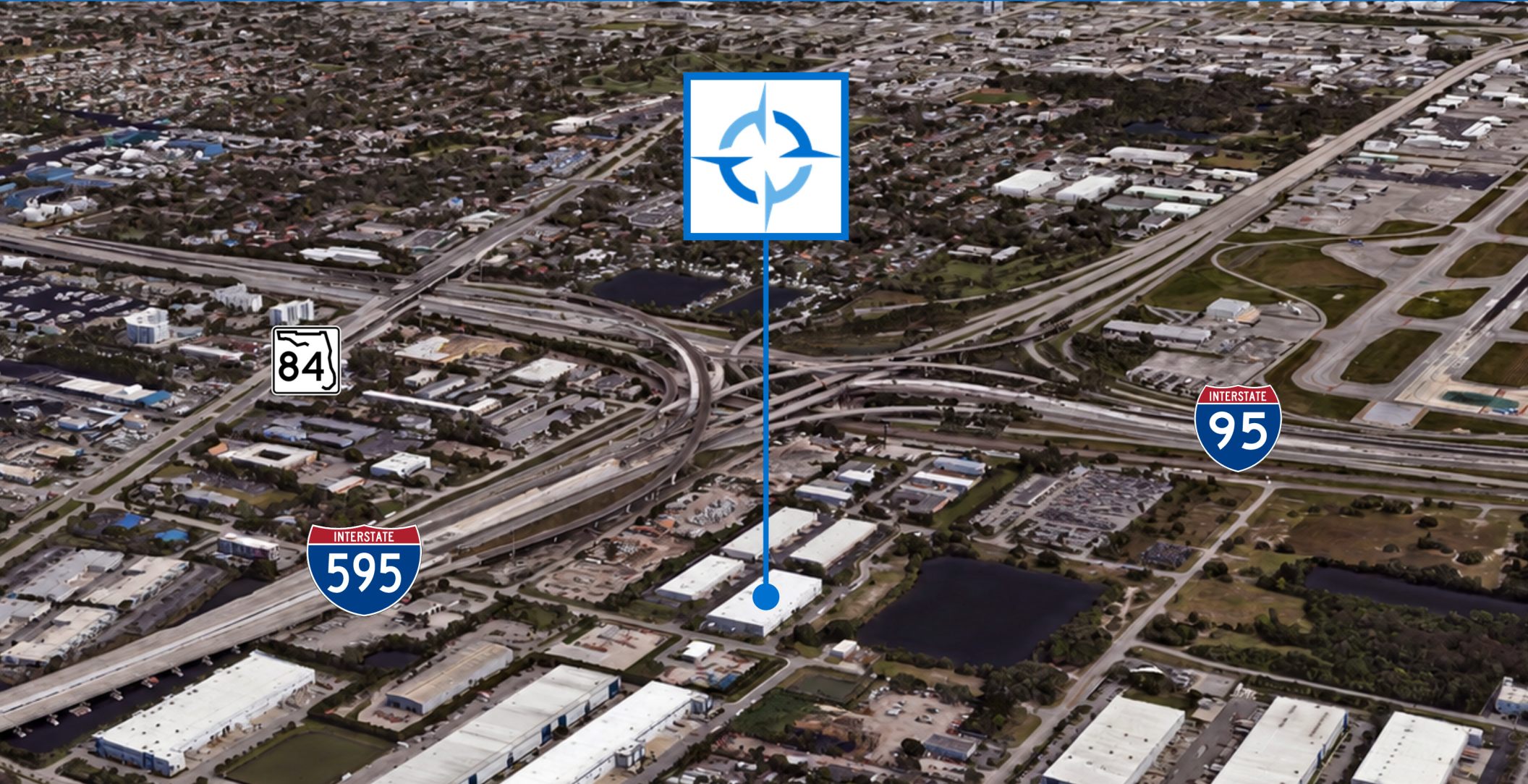
Keith R. Graves, CCIM, SIOR

954.652.2031

kgraves@bergercommercial.com



CORFAC
INTERNATIONAL



 3410 SW 26th Ter.
Dania Beach, FL 33312

© 2026 Berger Commercial Realty Corp., a Licensed Real Estate Broker. All rights reserved.

Jonathan Thiel

954.732.7453

jthiel@bergercommercial.com

Daniel Forman

954.224.9741

dforman@bergercommercial.com

Keith R. Graves, CCIM, SIOR

954.652.2031

kgraves@bergercommercial.com



COMMERCIAL BROKERAGE AND PROPERTY MANAGEMENT

**CORFAC**
INTERNATIONAL



Total Square Footage
± 51,574 SF



Units From
± 22,619 SF



Office Square Footage
± 1,920 SF - ± 3,862 SF



Clear Height
32'



Dock High Doors
15



Ramp Doors
2 (12' X 14')



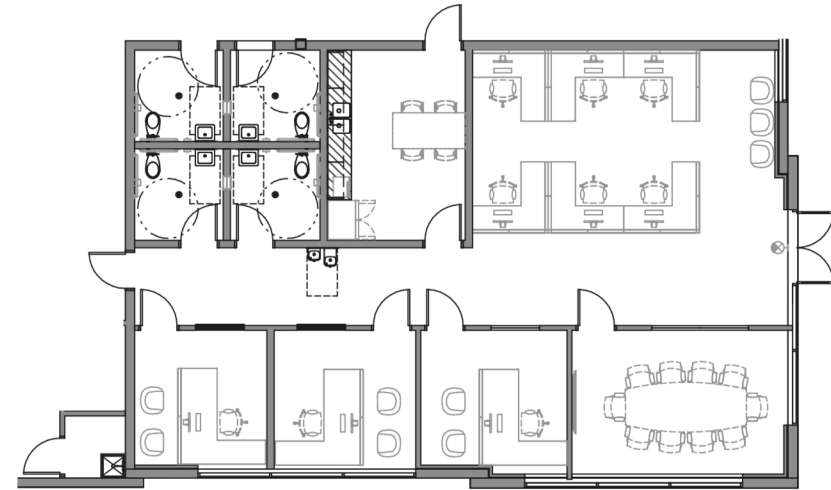
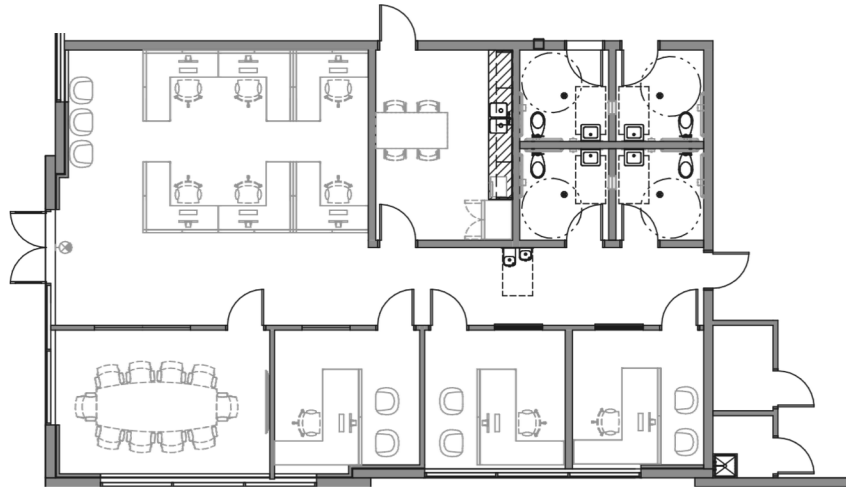
Column Spacing
54' X 40'



Power Specs
3-phase, 480V, 1,000 Amps
*With capacity to upgrade**



Truck Court
145'



Suite 100

Office Square Footage	± 1,942 SF
Private Offices	3
Conference Room	1
Breakroom	1
Restrooms	4
Ceiling Height	10'

Suite 200

Office Square Footage	± 1,920 SF
Private Offices	1
Conference Room	1
Breakroom	1
Restrooms	4
Ceiling Height	10'

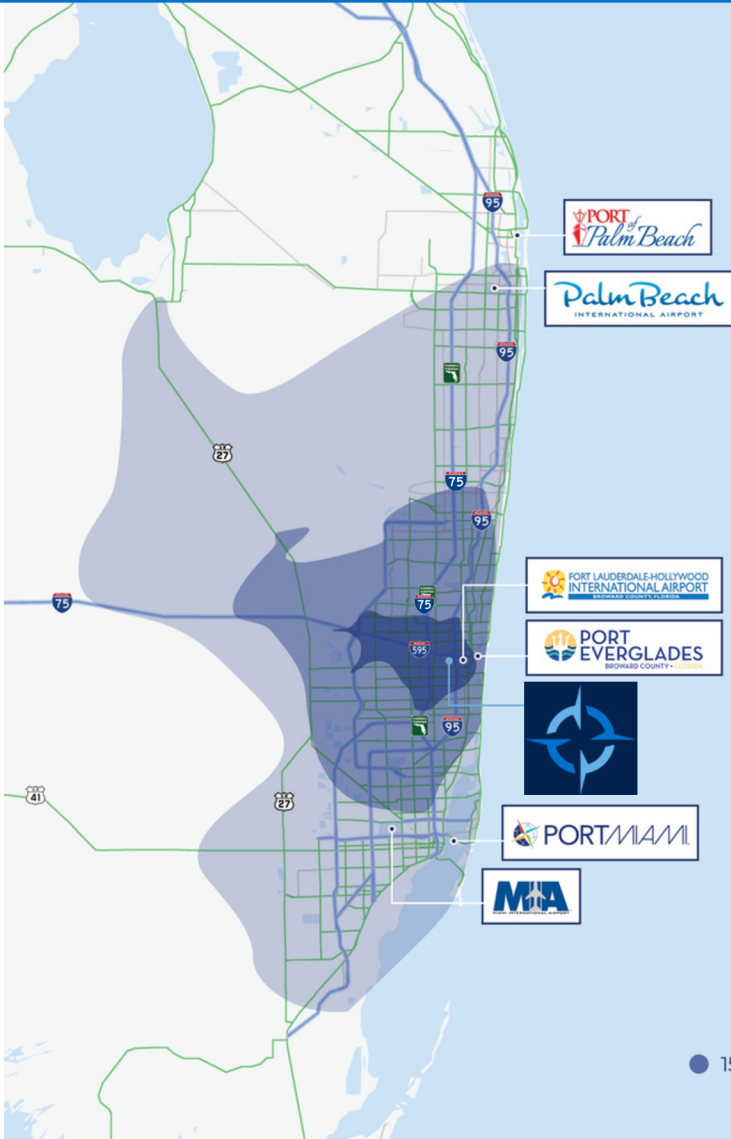
 3410 SW 26th Ter.
Dania Beach, FL 33312

© 2026 Berger Commercial Realty Corp., a Licensed Real Estate Broker. All rights reserved.

Jonathan Thiel
954.732.7453
jthiel@bergercommercial.com

Daniel Forman
954.224.9741
dforman@bergercommercial.com

Keith R. Graves, CCIM, SIOR
954.652.2031
kgraves@bergercommercial.com



● 15 Min Drivetime ● 30 Min Drivetime ● 60 Min Drivetime

Interstates

I-95	Immediate
I-595	3 mins.
Florida Turnpike	5 mins.
I-75	10 mins.
US-27	16 mins.

Airports

FLL-Hollywood Int'l Airport	10 mins.
Miami Int'l Airport	35 mins.
Palm Beach Int'l Airport	40 mins.

Ports

Port Everglades	10 mins.
Port of Miami	30 mins.
Port of Palm Beach	50 mins.



COMPANY OVERVIEW

- 12+** Million SF Owned & Operated
- 200+** Buildings Nationwide
- 600+** Tenants Across Portfolio
- 20+** Years of Operating Experience

FOR MORE INFORMATION
PLEASE CONTACT:



Jonathan Thiel

954.732.7453

Jthiel@bergercommercial.com

Daniel Forman

954.224.9741

Dforman@bergercommercial.com

Keith Graves, SIOR, CCIM

954.652.2031

Kgraves@bergercommercial.com